

MRVMS 3.0 User Manual

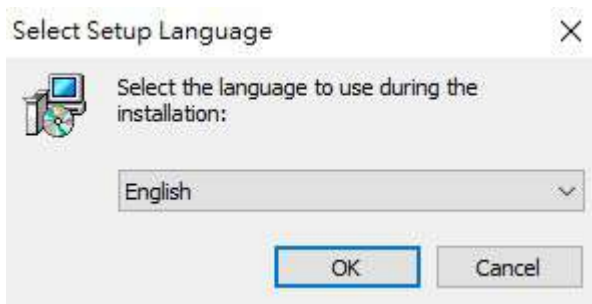
Introduction

- Apply to Mobile DVR Series models
- Support liveplayer, map, eventlist, carinfo, video downloads ...etc.
- The installation of a single module can be expanded software
- Execute module to create function.
- Modules can be configure freely

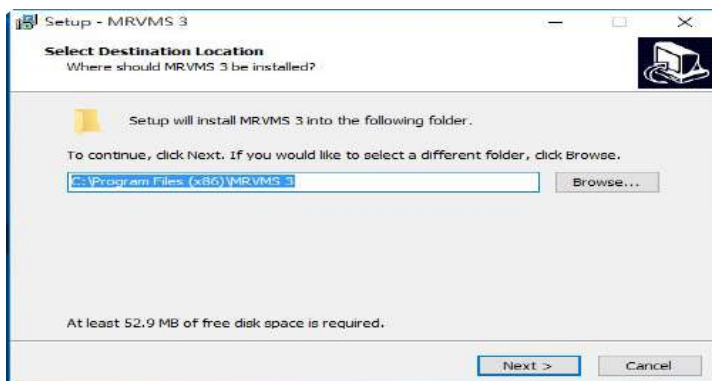
Installation

① Click MR_VMS3_Setup

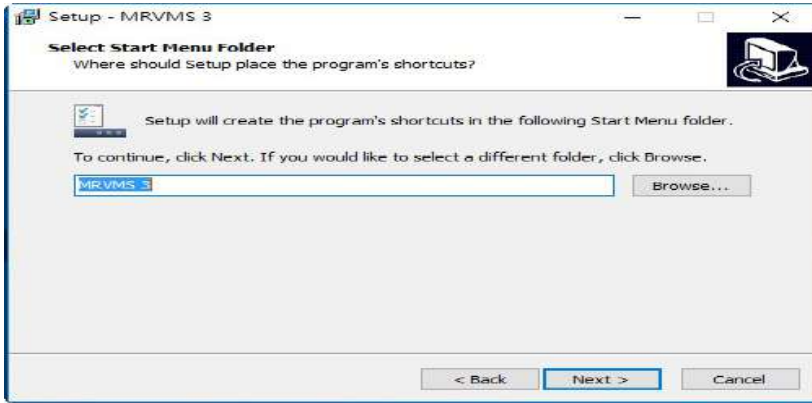
② Select setup language



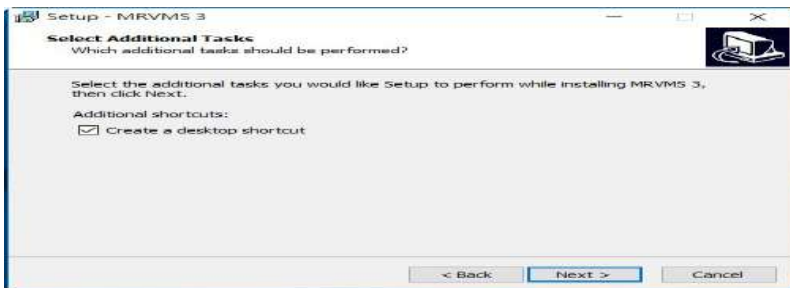
③ Select destination location



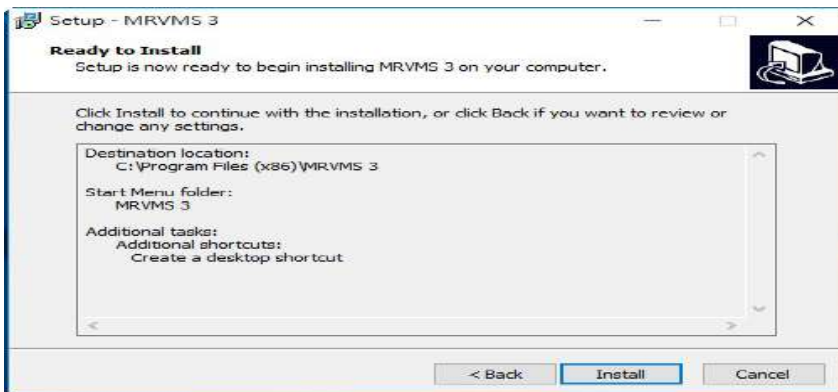
④ Select start menu folder



⑤ Select additional tasks



⑥ Ready to install



⑦ Finish setup



Login



Server hostname : Register server IP


Port : 8788 (Default)

Account : User name @ Company name

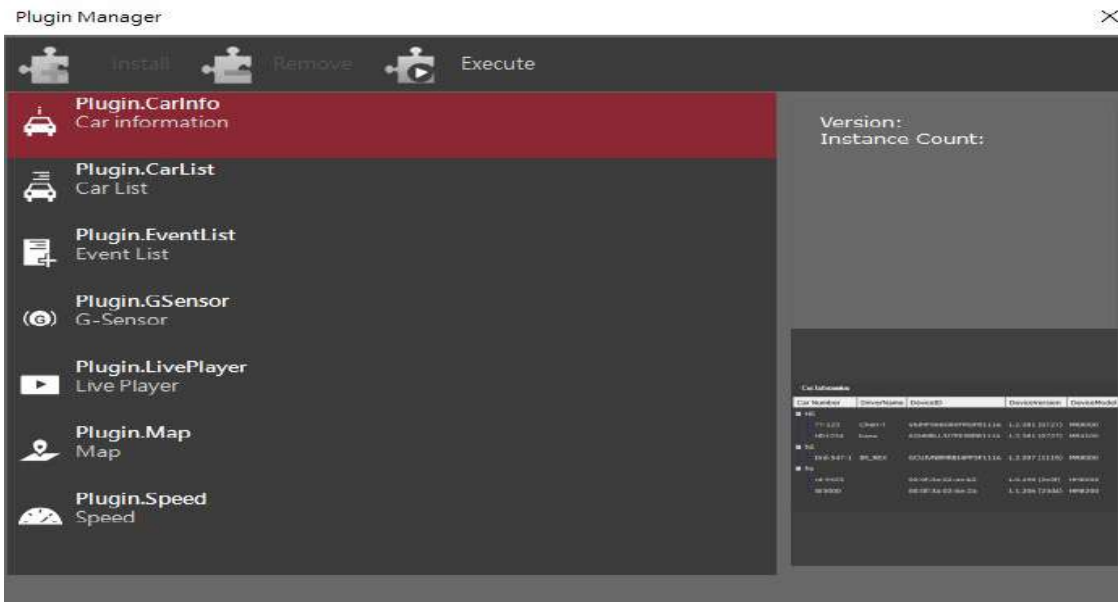
Password : Setting by user

Toolbar


Module Manager

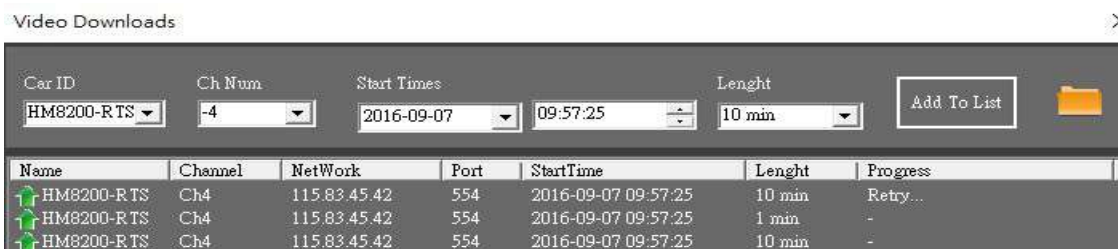
You can receive vehicle information by executing module manager. Click  to execute module manager. There are 3 ways to execute module manager.

- ① Select the module and then drag it to Homepage.
- ② Click the module twice
- ③ Select the module and then click Execute



Video Download

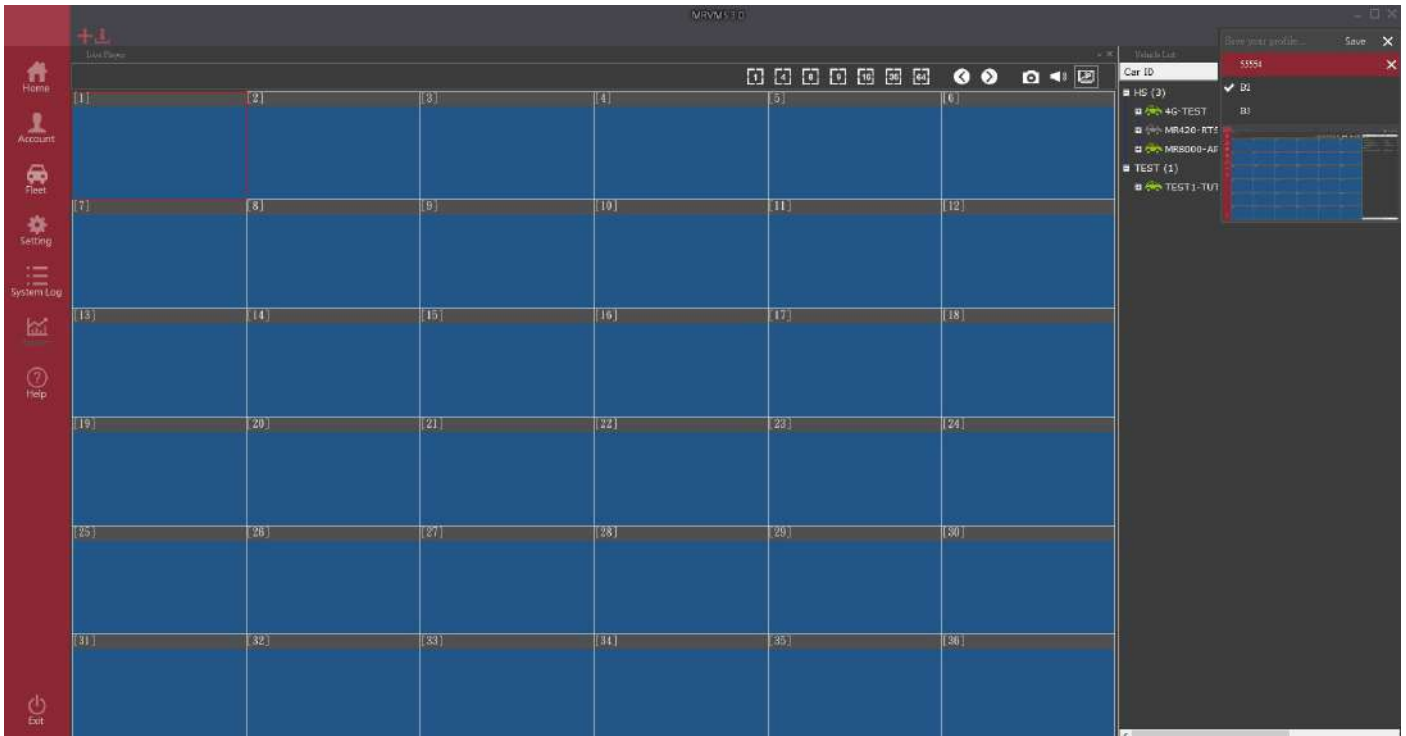
- ① Click  to start video download
- ② Key in the information and then click **Add To List**
- ③ The system will download automatically. It can download three progresses at the same time.



Event Manager

User Profile

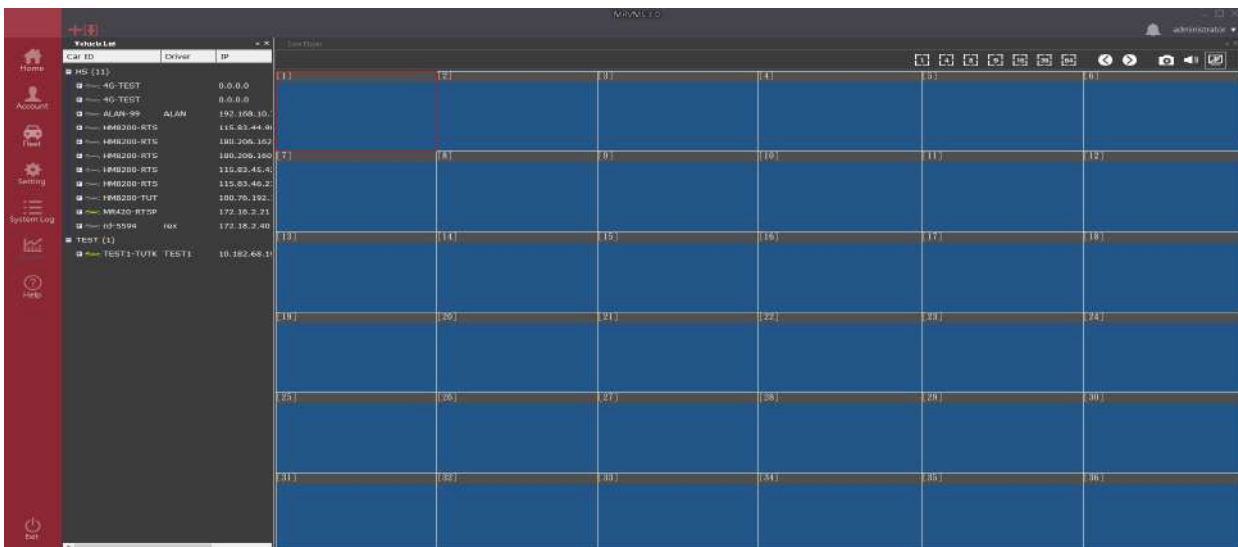
The user can configure homepage freely. The program will automatically load the last configuration in next time.



Setup

❖ Home

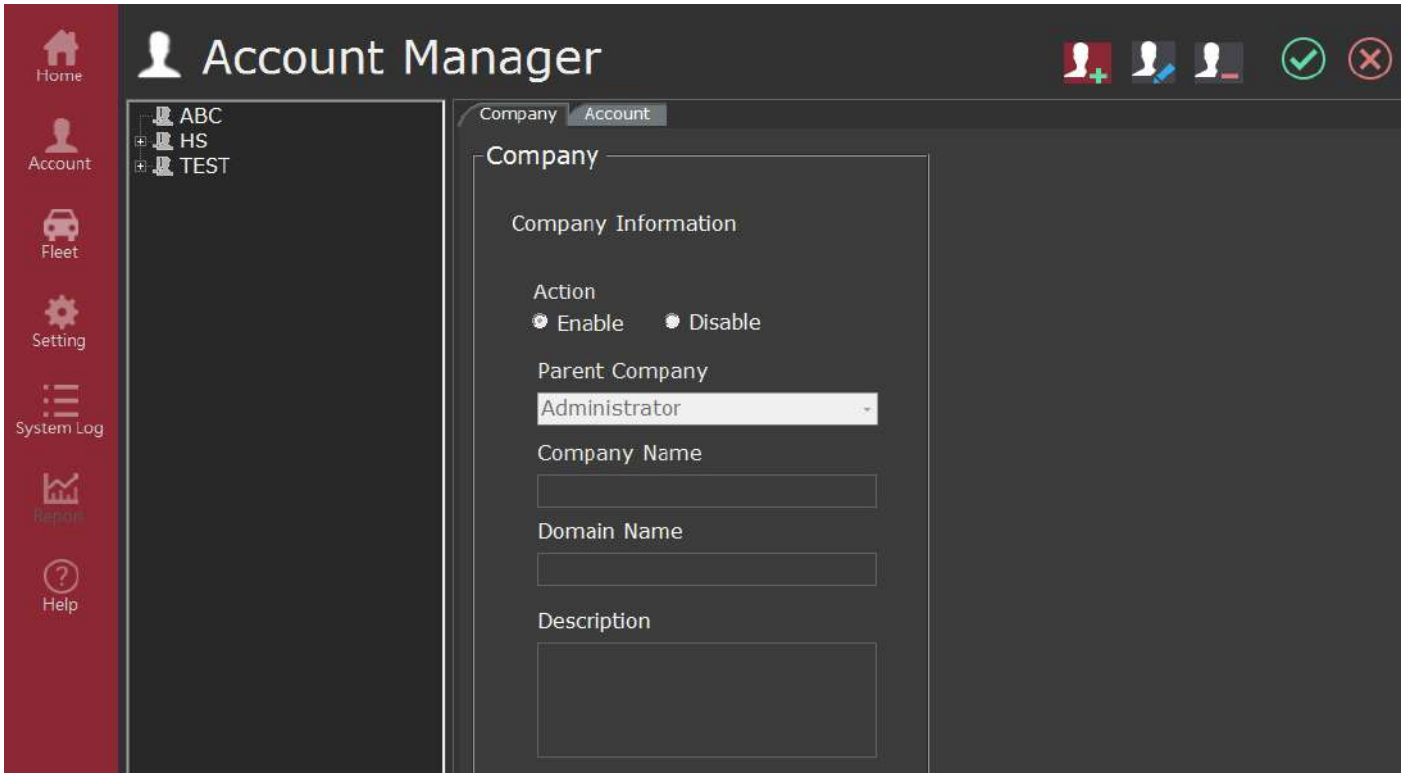
Execute all the modules will show in homepage.





❖ Account Manager

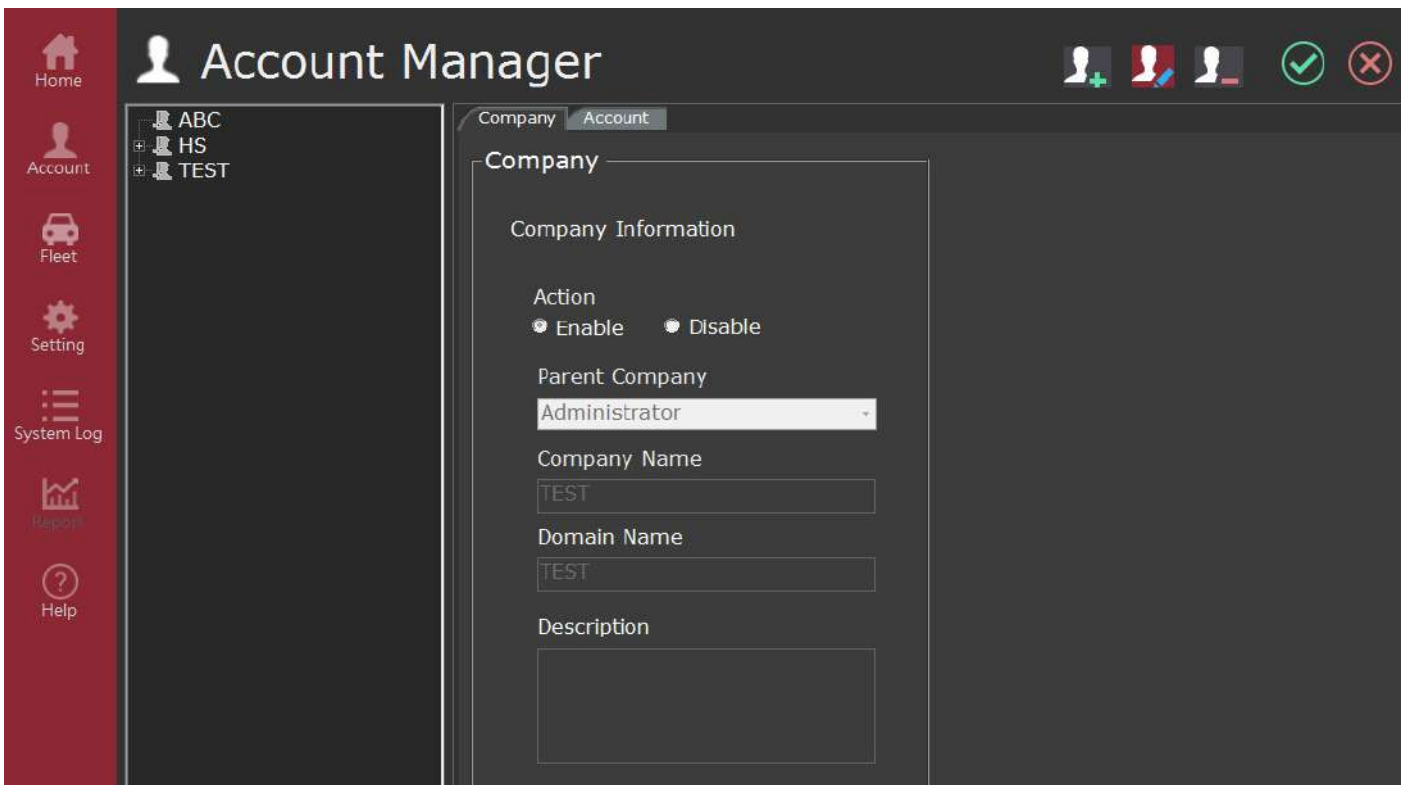
Company



- I. Create company



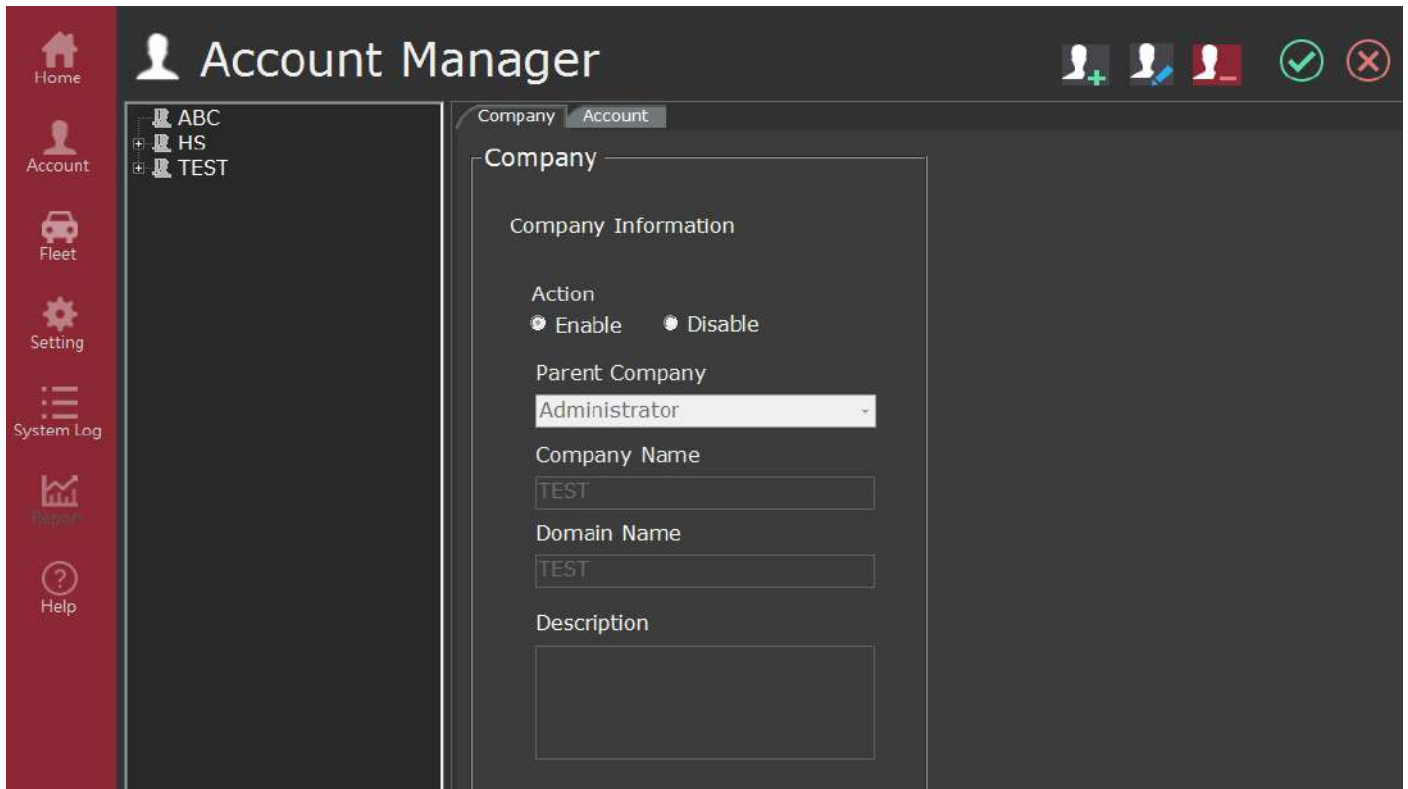
Click  to create company and key in the information. Click  after changing.



II. Modify company



Select the company and then click  to modify company. Click  after changing.

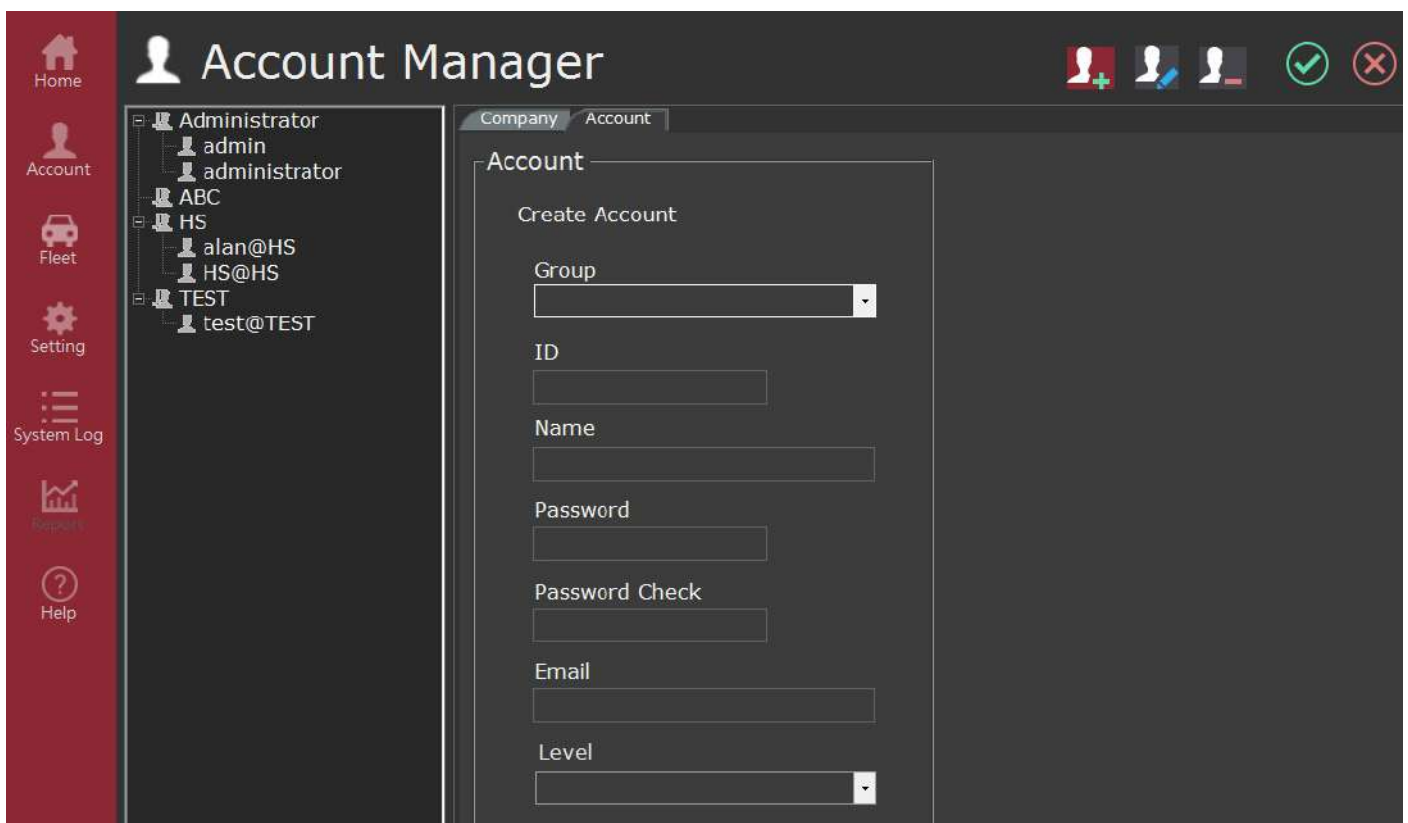
III. Delete company





Select the company and then click  to delete company. Click  after changing.

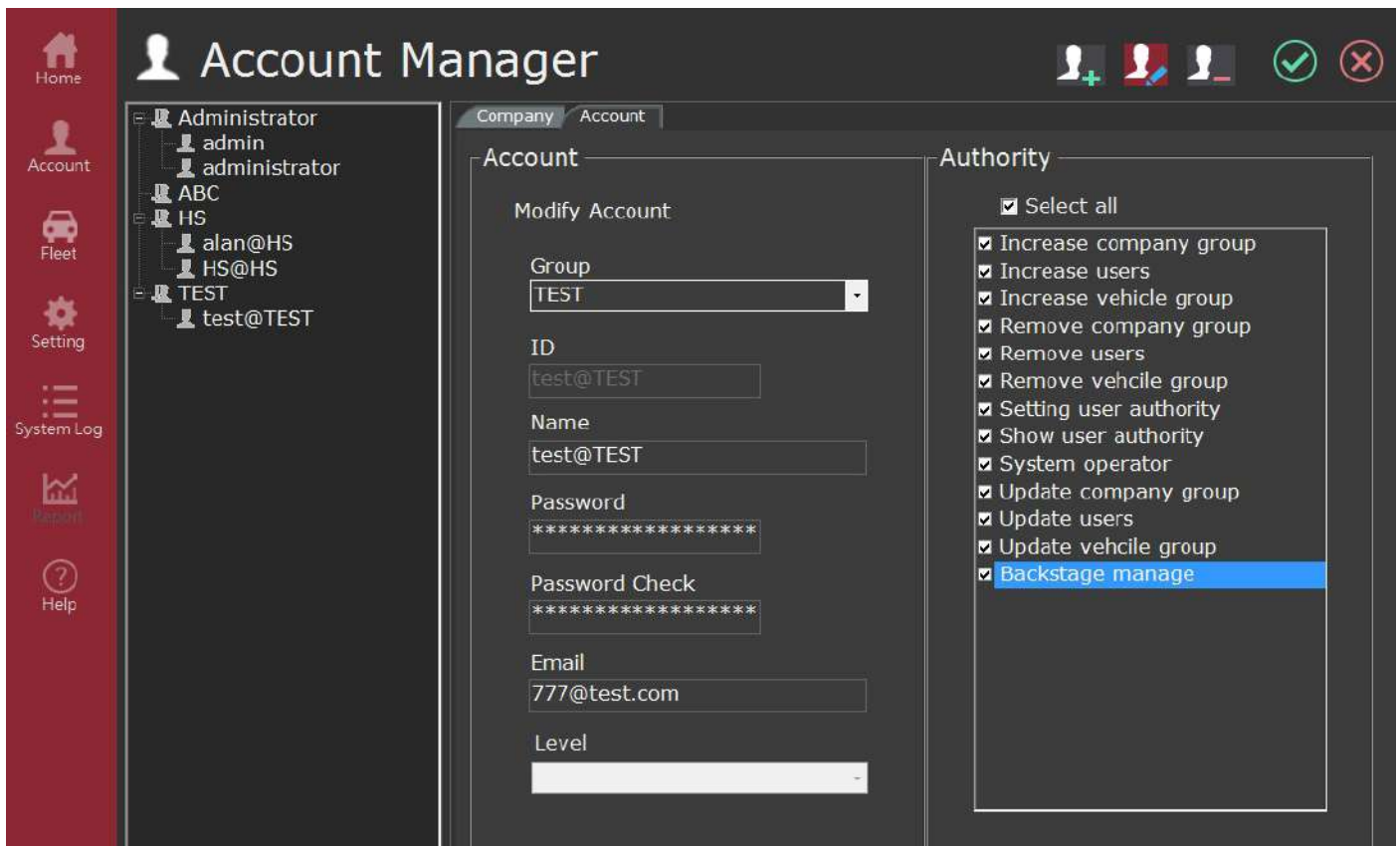
Account



I. Create account



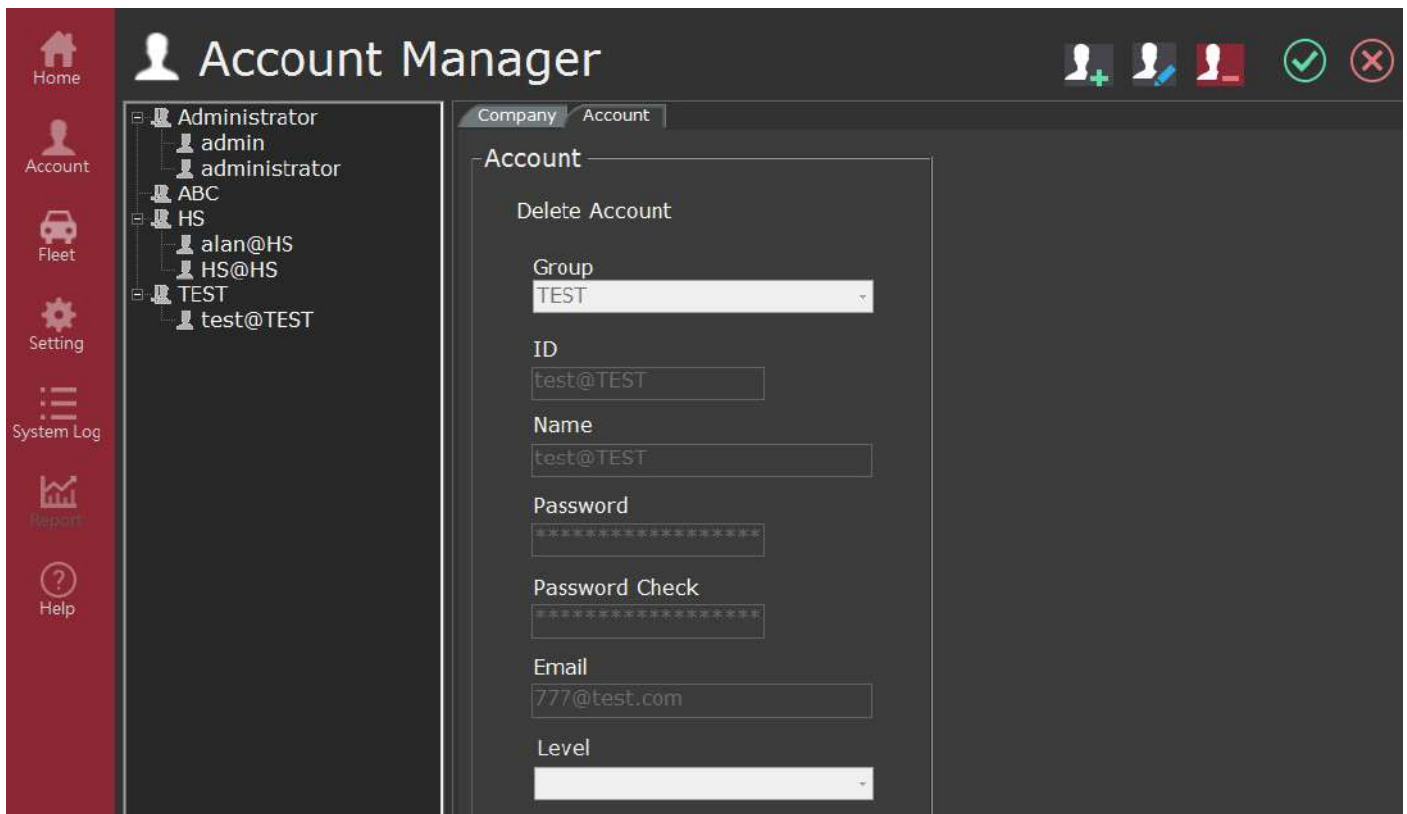
Click  to create account and key in the information. Click  after changing.

II. Modify account



Select the account and then click  to modify account. Click  after changing.

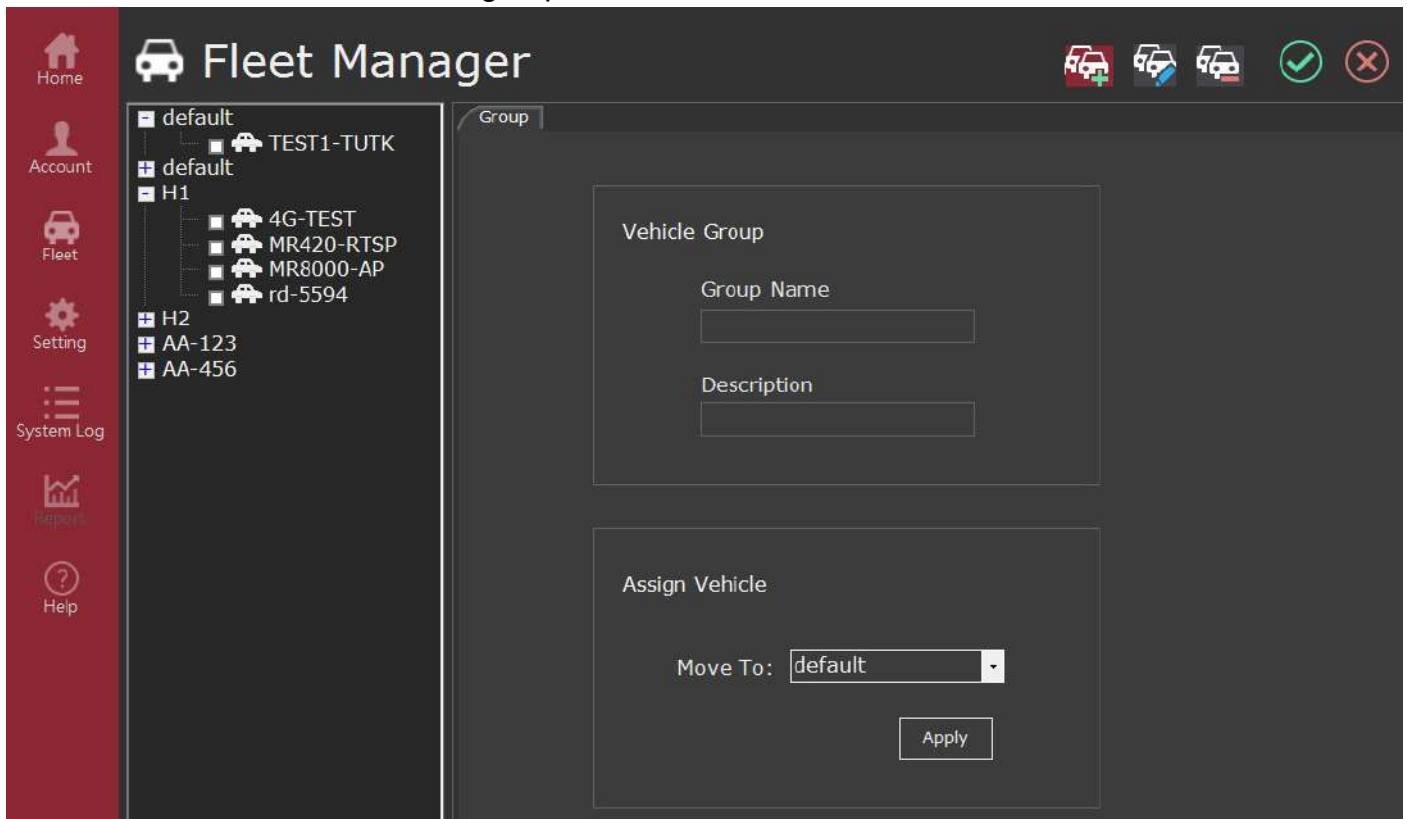
III. Delete account





Select the account and click  to delete account. Click  after changing.

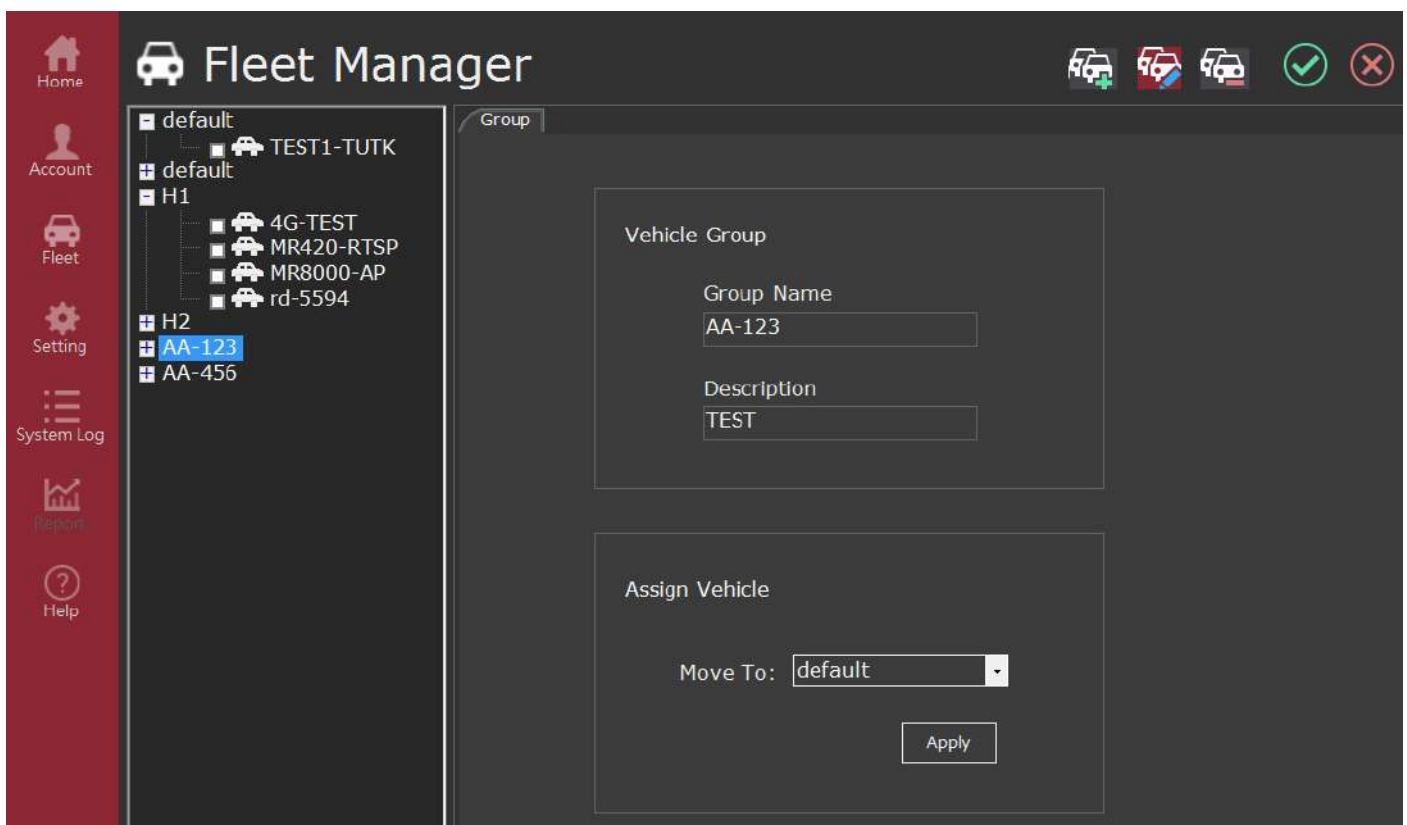
❖ Fleet manager



I. Create vehicle group



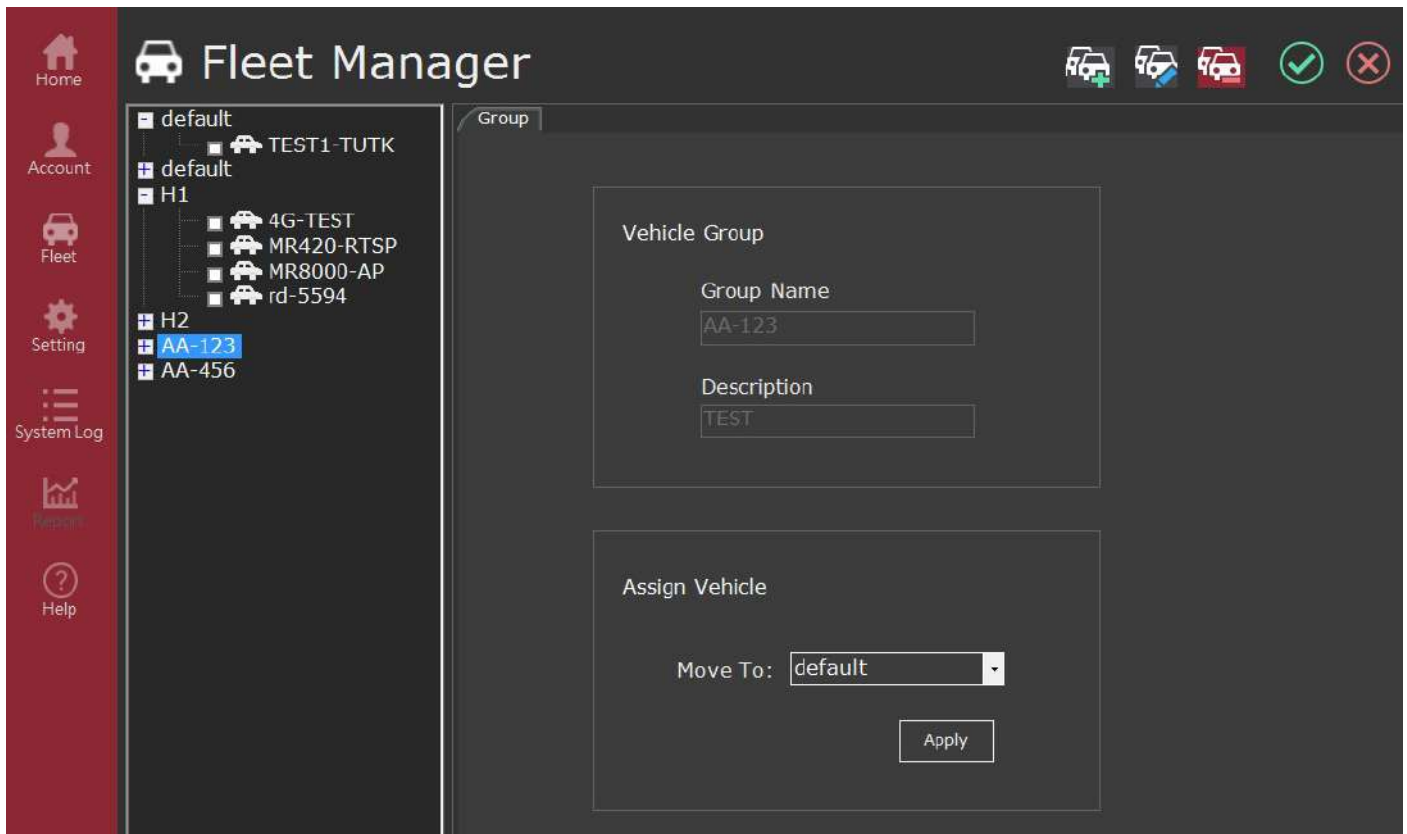
Click  to vehicle group and key in group name and description. Click  after changing.



II. Modify vehicle group



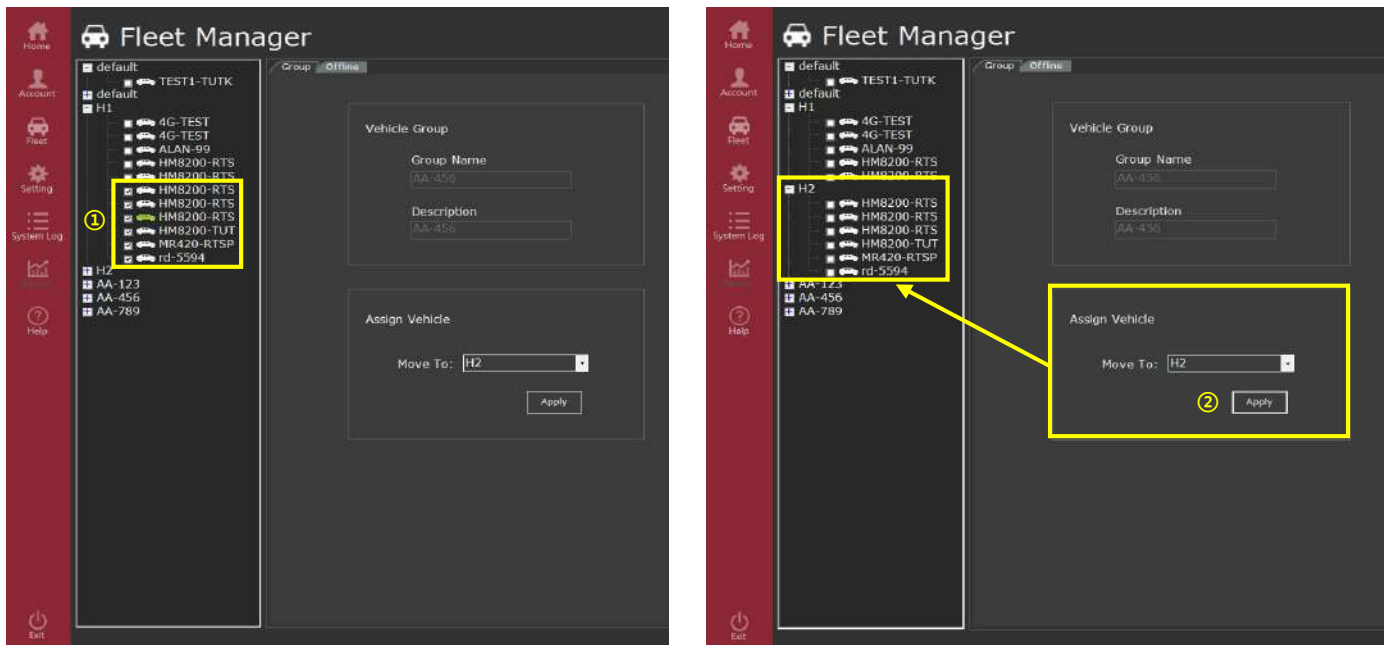
Select the vehicle group and then click  to modify vehicle group. Click  after changing.

III. Delete vehicle group



Select the vehicle group and then click  to delete vehicle group. Click  after changing.

IV. Assign vehicle



- ① Select the vehicle.
- ② Select the other vehicle group to move. Click Apply after changing.

✧ Setting

DVR configure

The screenshot shows the 'Configure Setting' page for DVR configuration. The left sidebar contains navigation options: Home, Account, Fleet, Setting, System Log, Report, and Help. The main content area is titled 'DVR Configure' and features a tree view on the left with nodes: default, default, H1, H2, AA-123, and AA-456. The right panel has tabs for Record, Device, Event, Network, and System. The 'Record' tab is active, showing settings for General Configuration (with an 'Overwrite' checkbox and a 'Post-record(sec)' dropdown), ACC Off Record Setting (with a 'Postpone Time' dropdown), and Streaming (with 'Quality' and 'FPS' dropdowns).

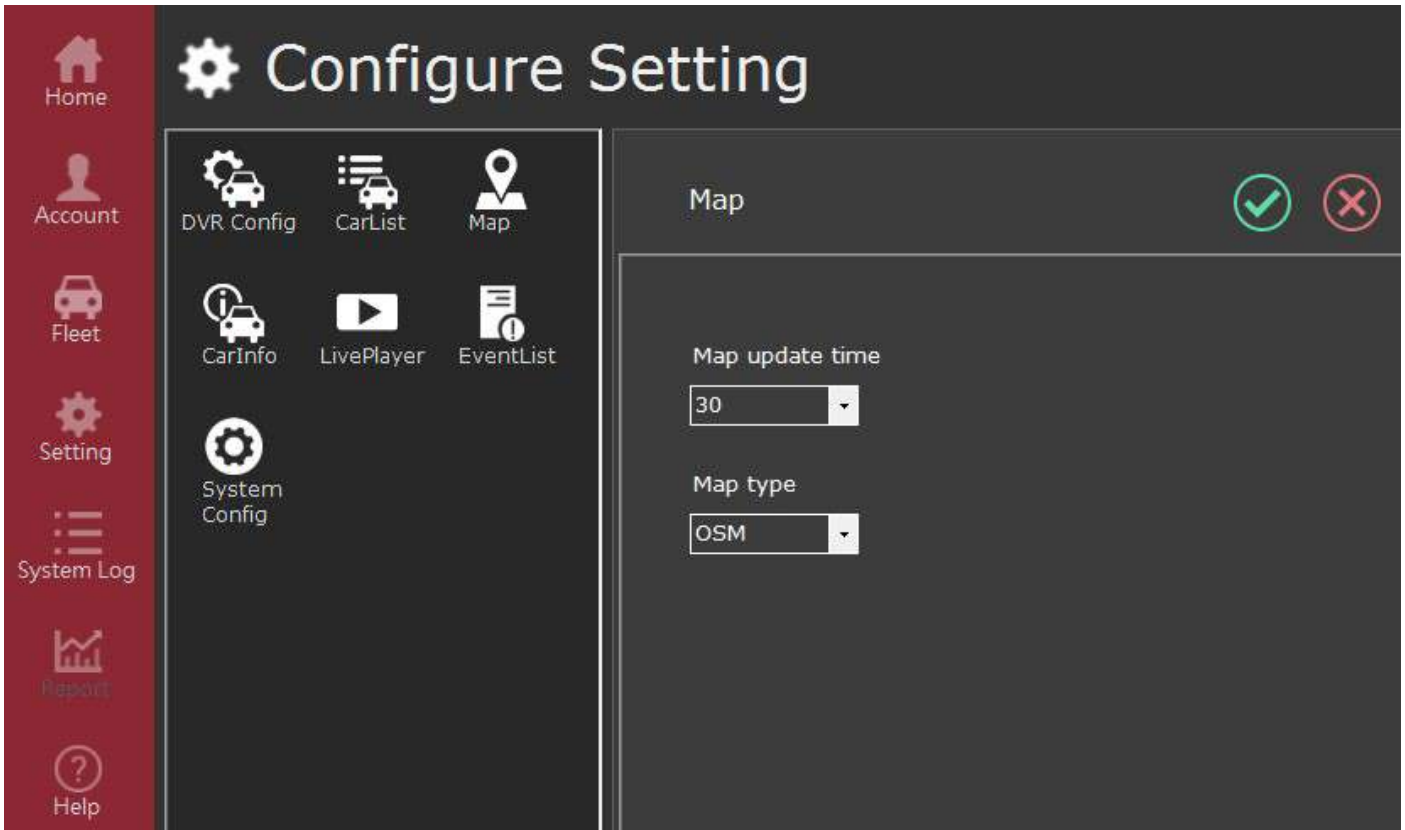
Carlist

The screenshot shows the 'Configure Setting' page for CarList configuration. The left sidebar is identical to the previous screenshot. The main content area is titled 'CarList' and includes a green checkmark and a red 'X' icon in the top right. The configuration options are: 'Car list update time' with a dropdown menu set to '30', and 'Custom list item height' with a text input field set to '25'.

Car list update time : 10 、 30 、 60 、 150

Custom list item height : Setting by user

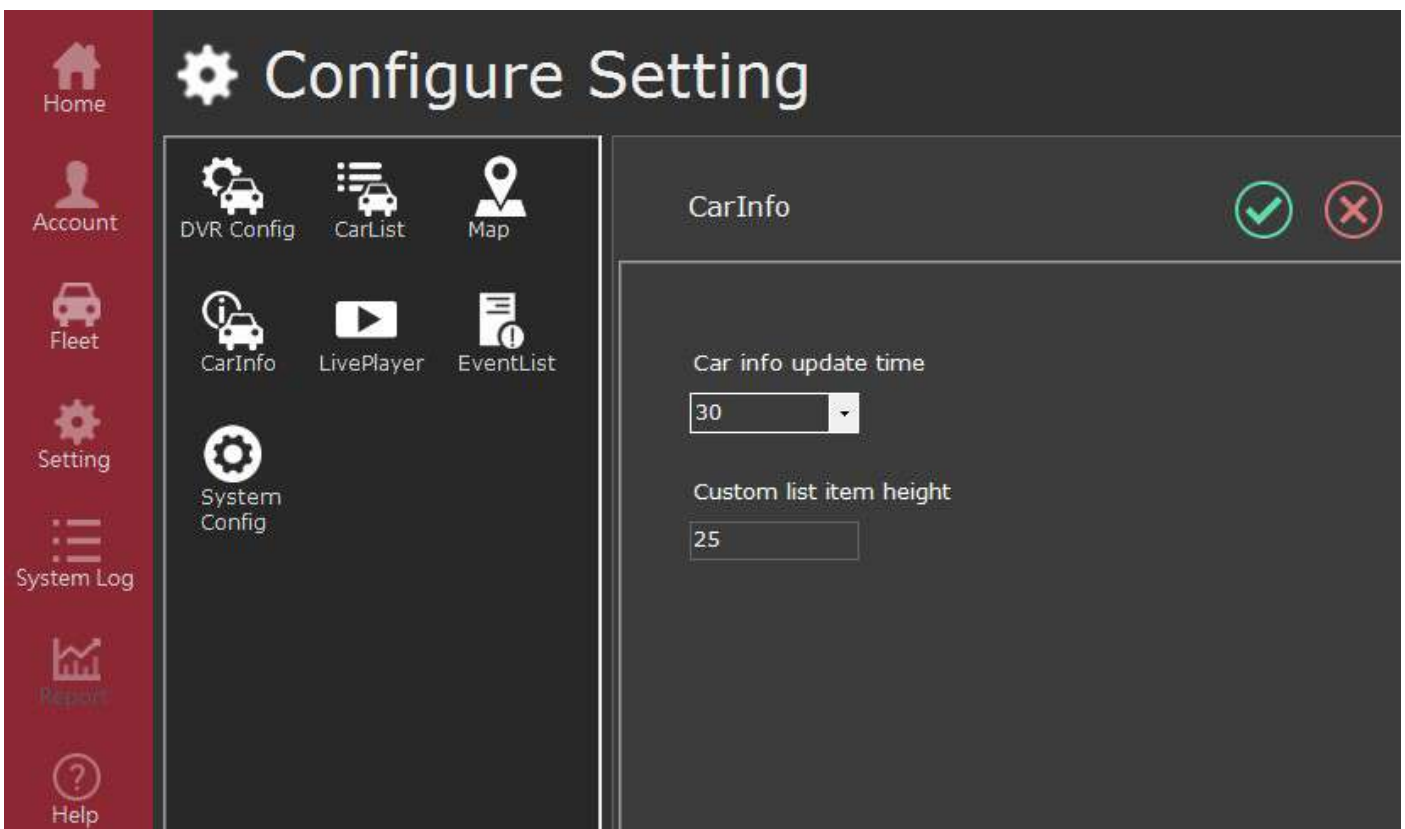
Map



Map update time : 10 、 30 、 60 、 150

Map type : Google 、 OSM

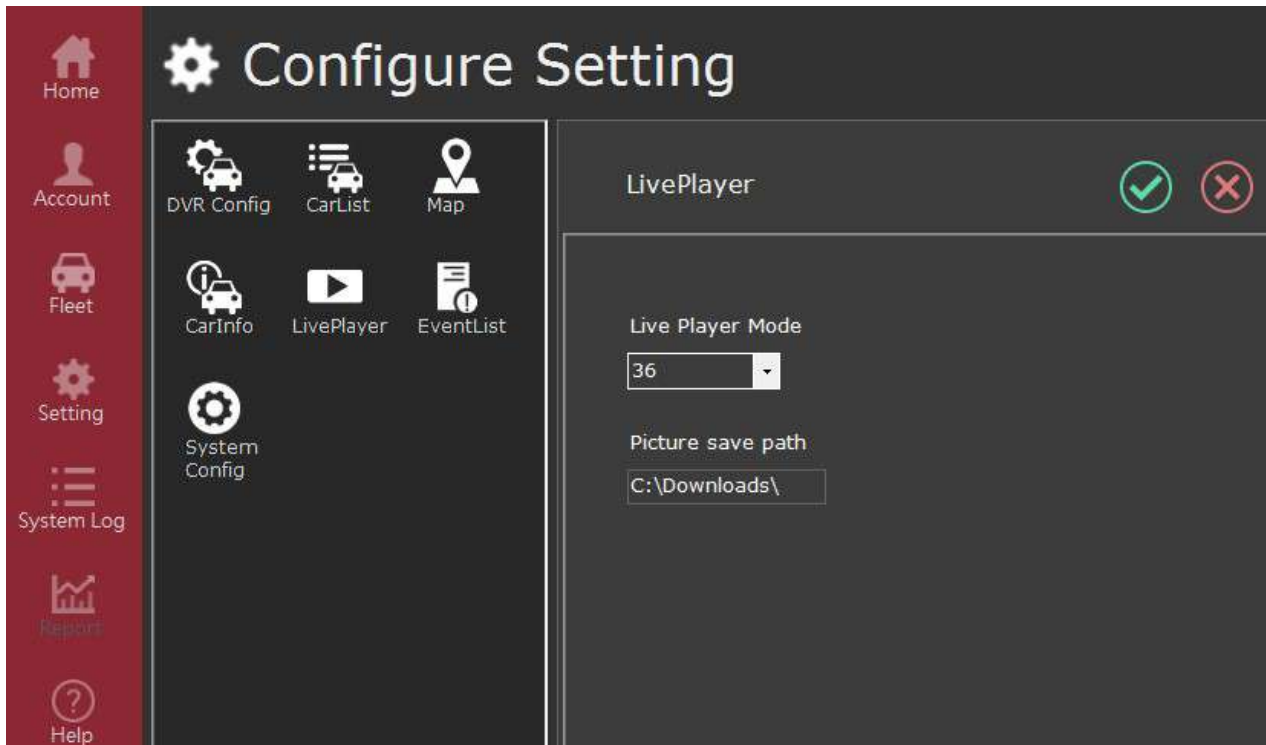
CarInfo



Car info update time : 10、30、60、150

Custom list item height : Setting by user

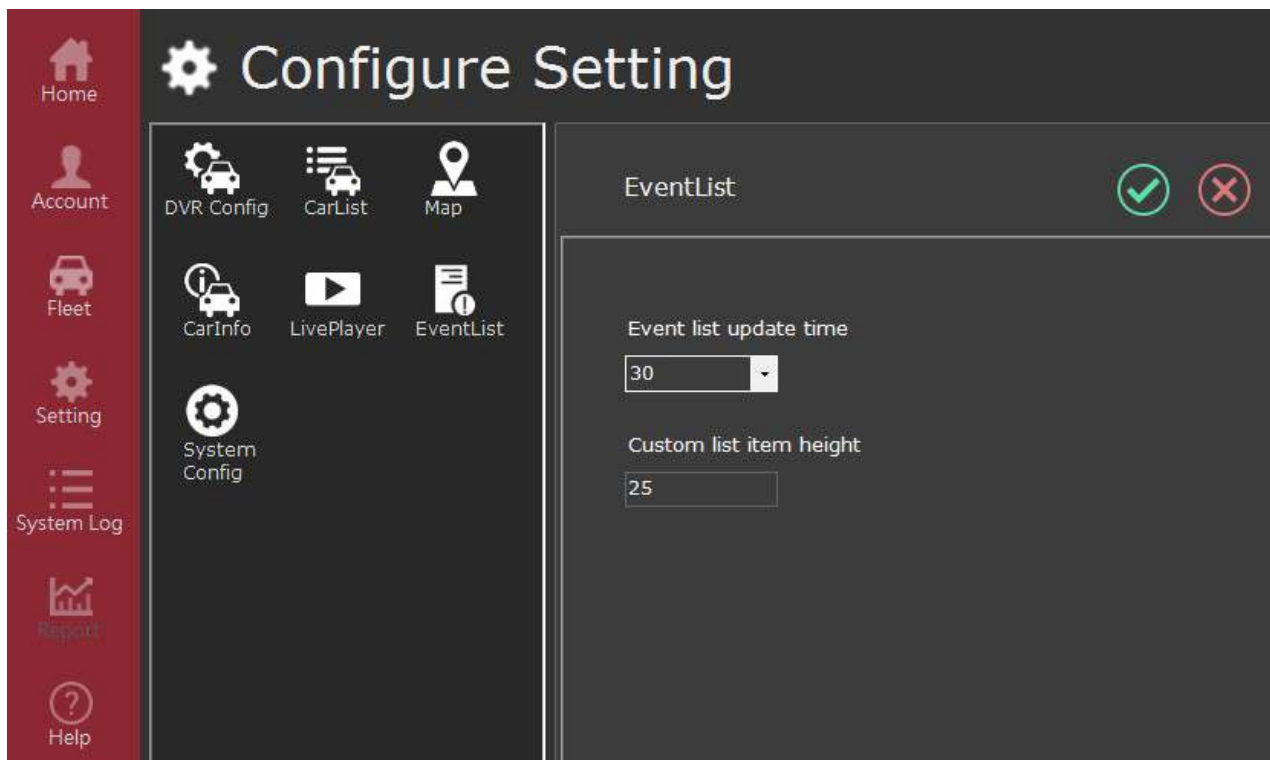
Liveplayer



Live player mode : 1、4、8、16、36、64

Picture save path : Setting by user

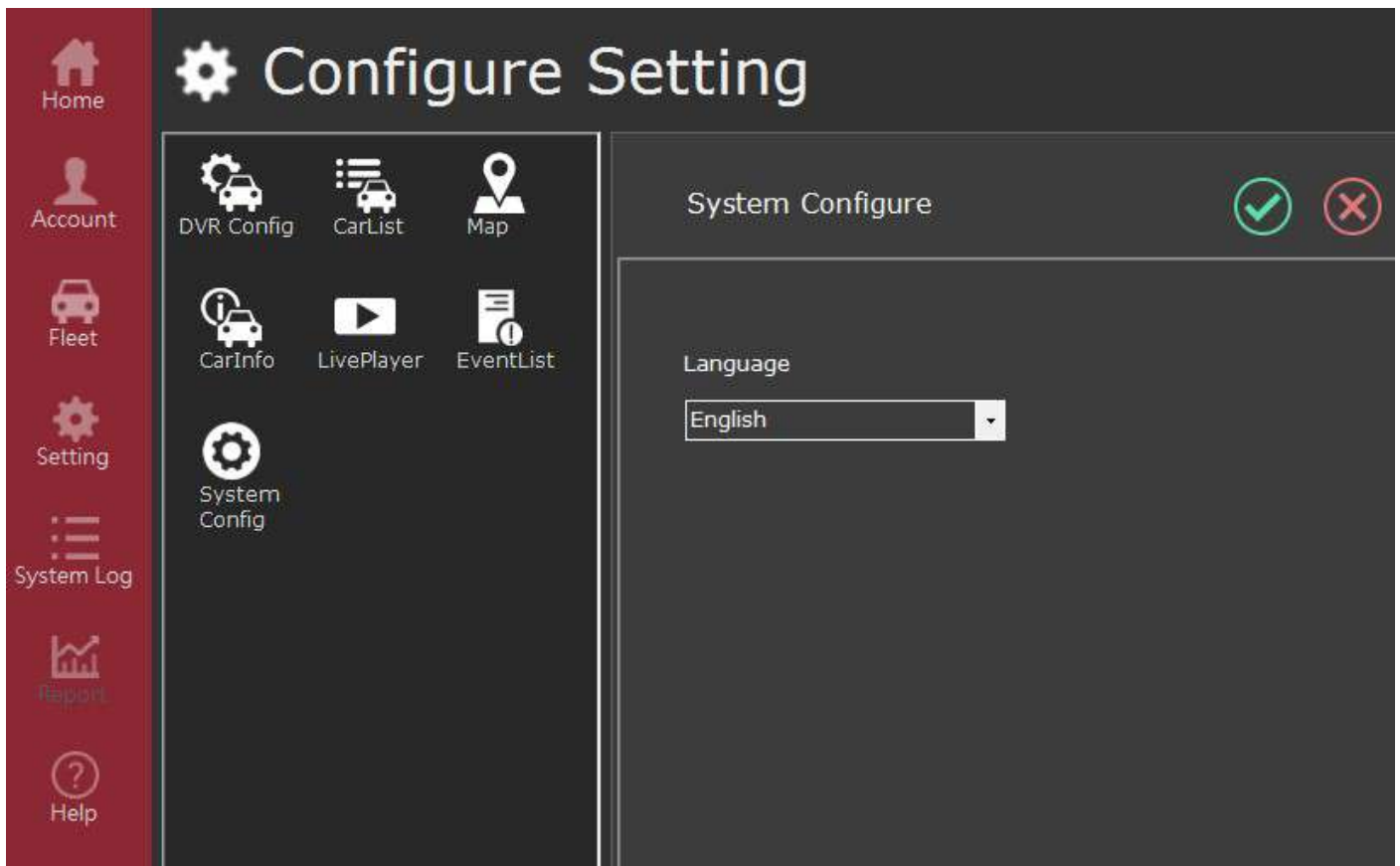
EventList



Event list update time : 10、30、60、150

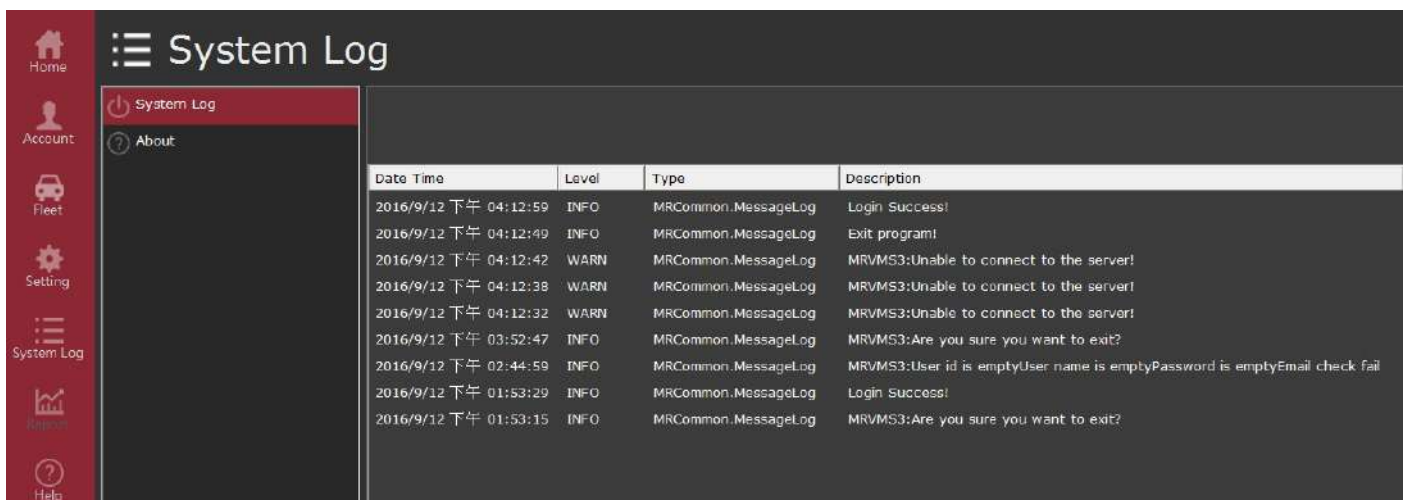
Custom list item height : Setting by users

System configure



Language : English、Japanese、Chinese

System log



Helper


Helper

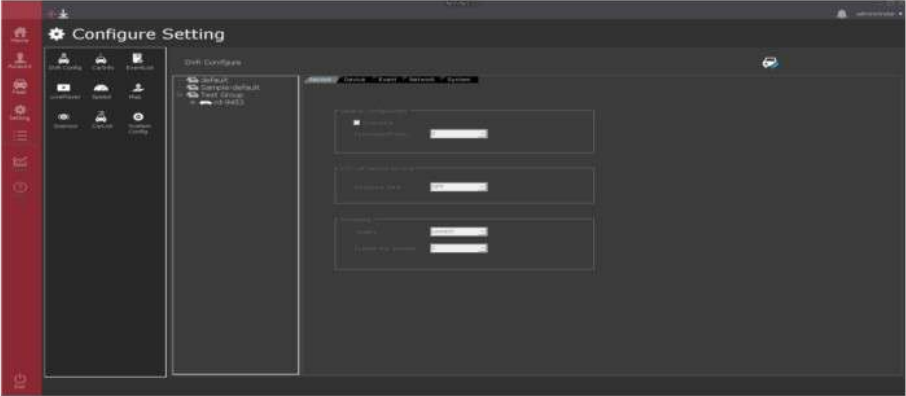
- Home
- Account
- Fleet
- Setting
- System Log
- Report
- Help


Initialize
Group
Module
Configure
About

How to set up DVR configure?

DVR Configure

① Main menu → Setting  → DVR Configure



② Select the vehicle and then click  to modify DVR Configure.

※ It needs some time to connect because of different network connection.